

Endocrine system - thyroid

↑
Cranial

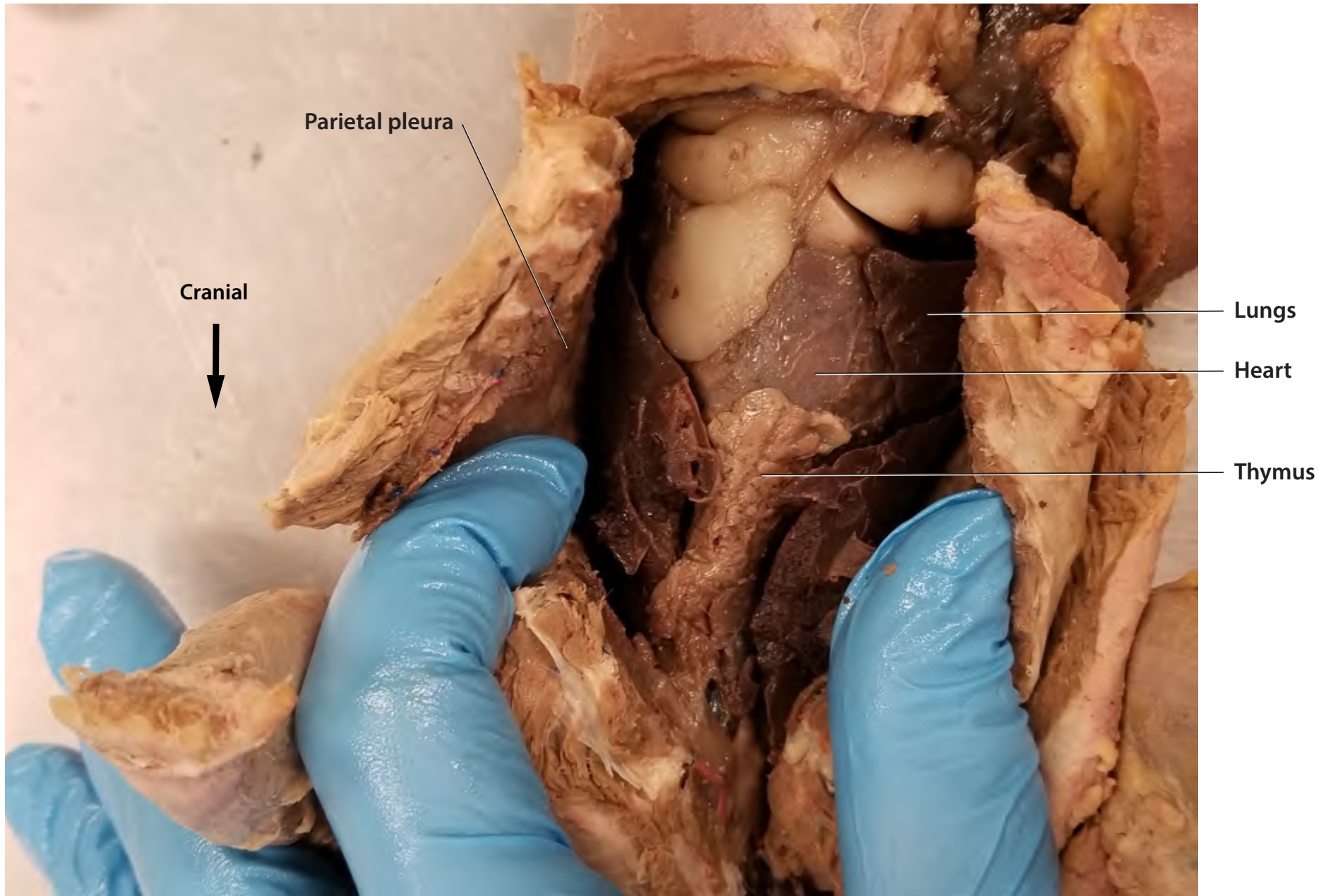
Thyroid



Thyroid

Trachea

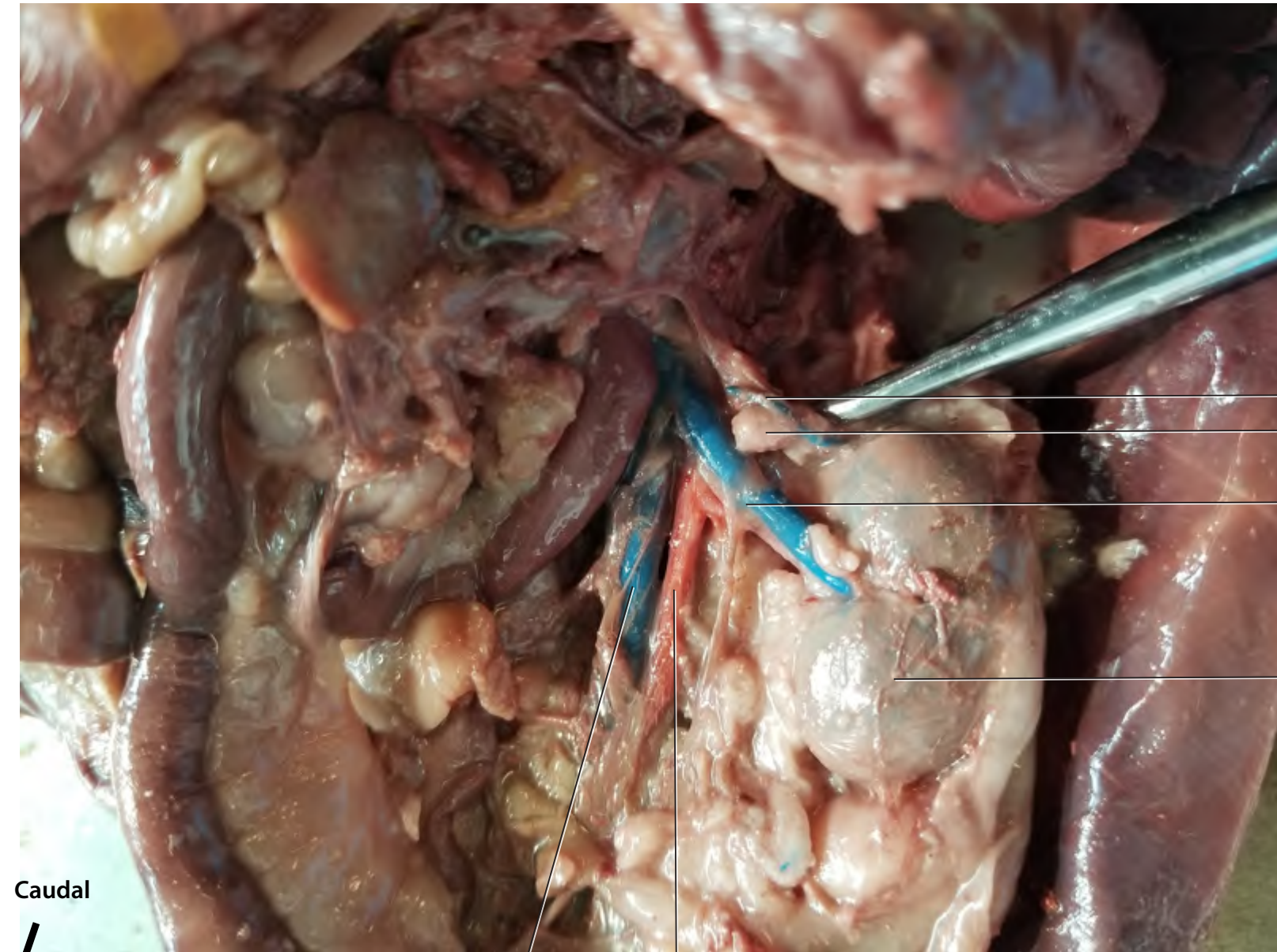
Endocrine system - thymus, lungs, pleura



Endocrine-digestive system: pancreas



Endocrine system- adrenal gland



Suprarenal V.
Adrenal gland

Renal A&V.

Kidney

Caudal
↓

Inferior vena cava
Aorta

Endocrine system - ovary



Oviduct

Ovary

Uterine horn

Urinary bladder

Caudal



Endocrine system - testes

← Cranial

Penis Spermatic cord Testes



Testes