

Respiratory system- epiglottis

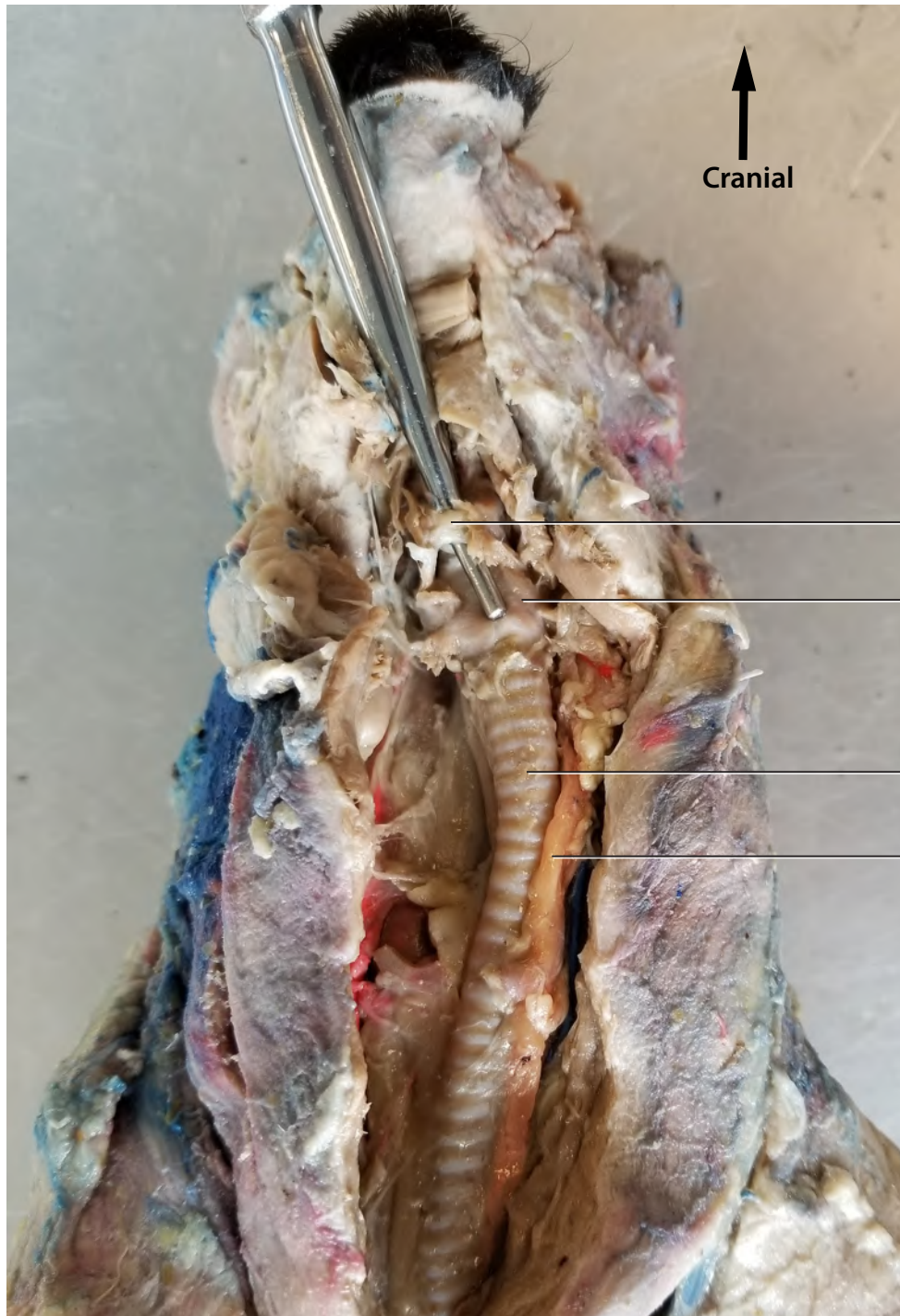


Epiglottis

Glottis, opening

Larynx, reflected ventrally

Respiratory system- hyoid



↑
Cranial

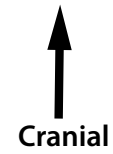
Hyoid over probe

Larynx

Trachea

Esophagus

Respiratory system- primary bronchi



Lung

Visceral pleura

Esophagus

Trachea

Lung

Primary bronchi

Parietal pleura

Heart
reflected caudally

